

LiDAR点群処理ソフトウェア

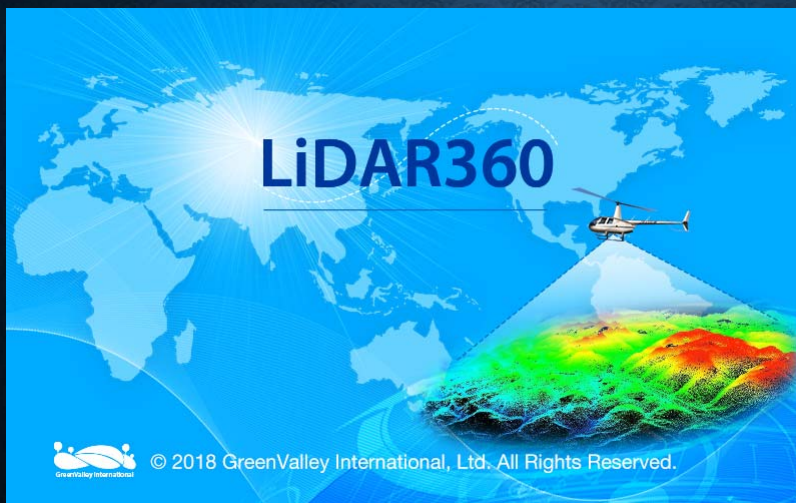
LiDAR360



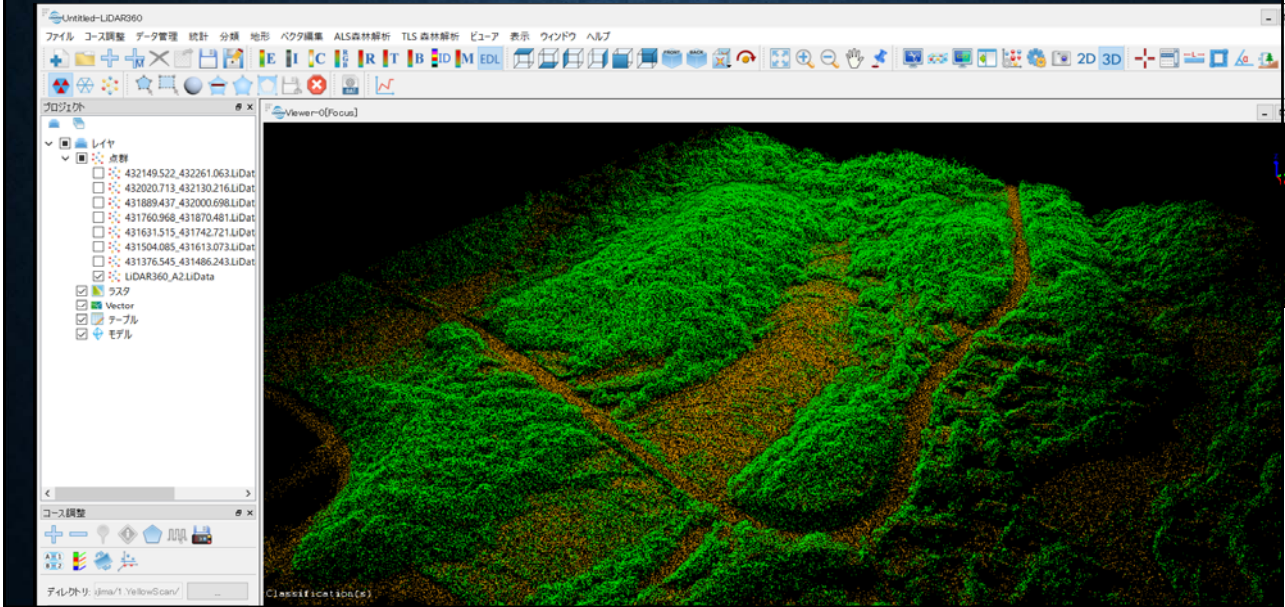
GreenValley International
Map the World in 3D

LiDAR360

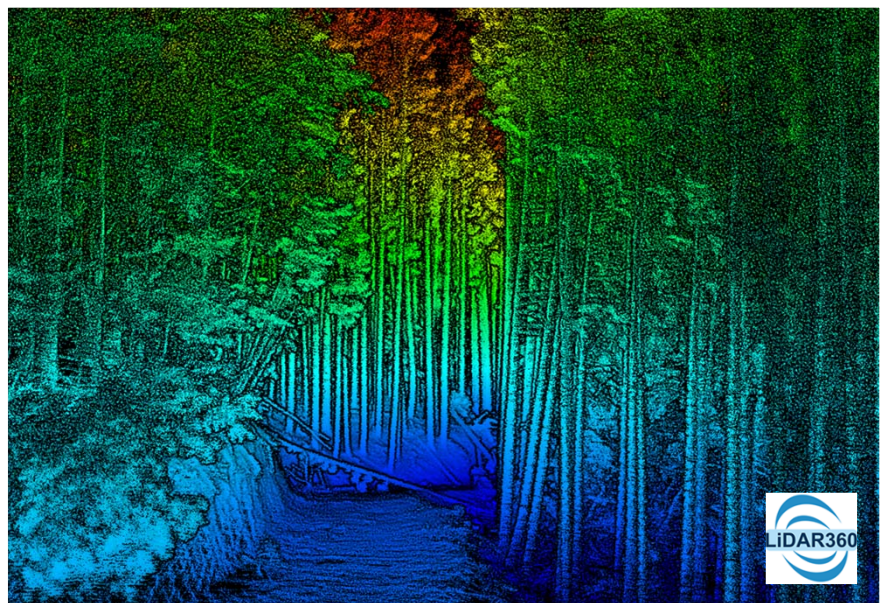
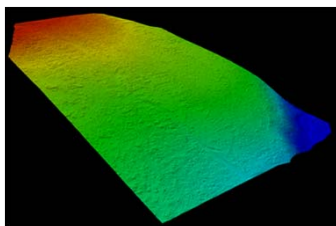
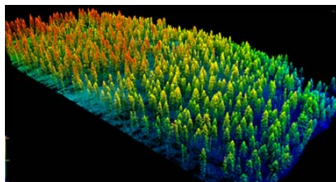
… LiDAR点群総合後処理ソフトウェア



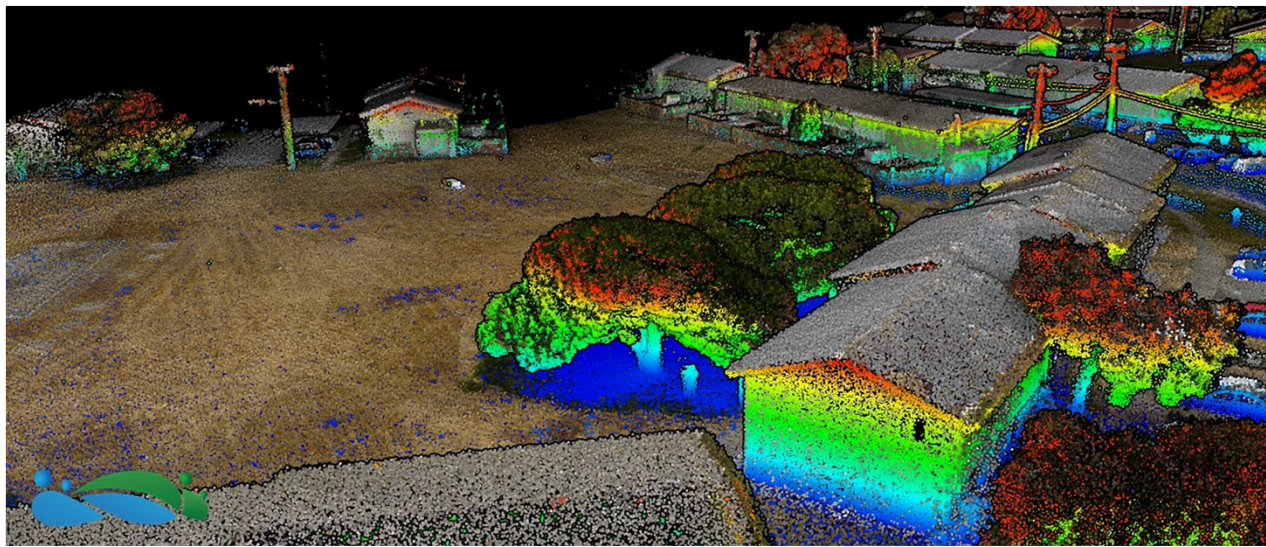
■ 日本語化インターフェイス



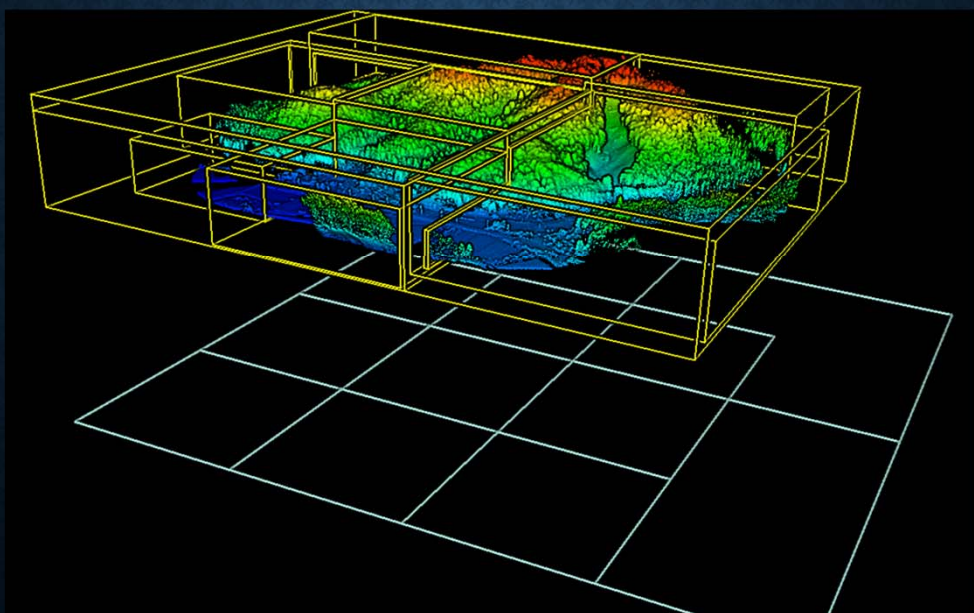
■ 様々な点群表示機能



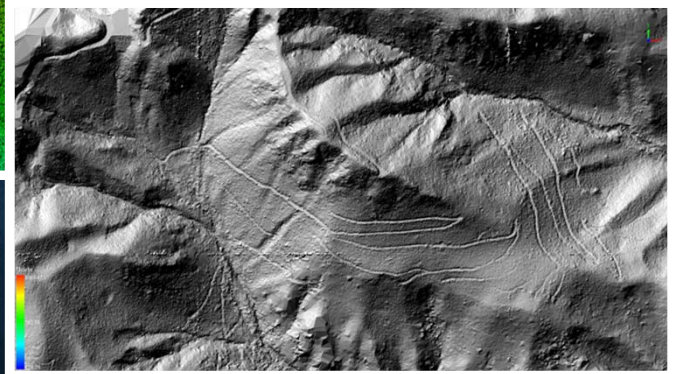
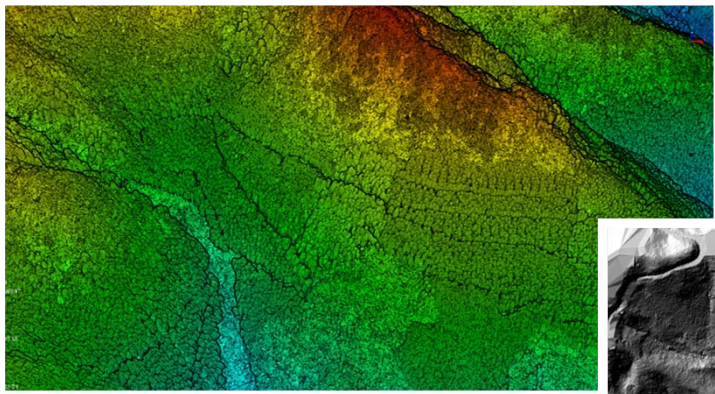
■ 様々な点群表示機能



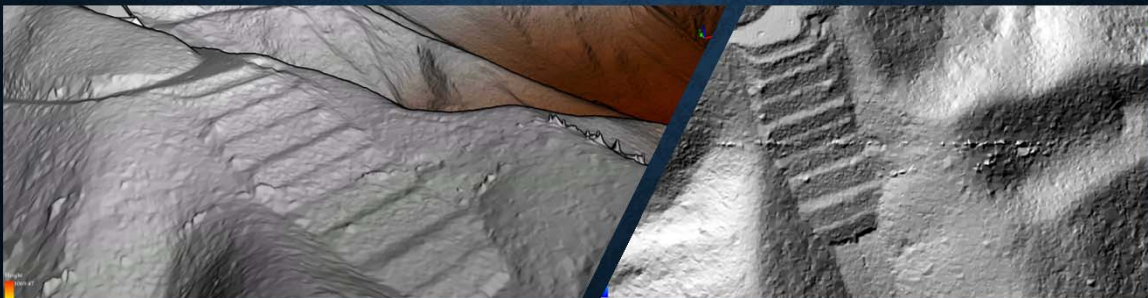
■ ブロックによるデータ管理



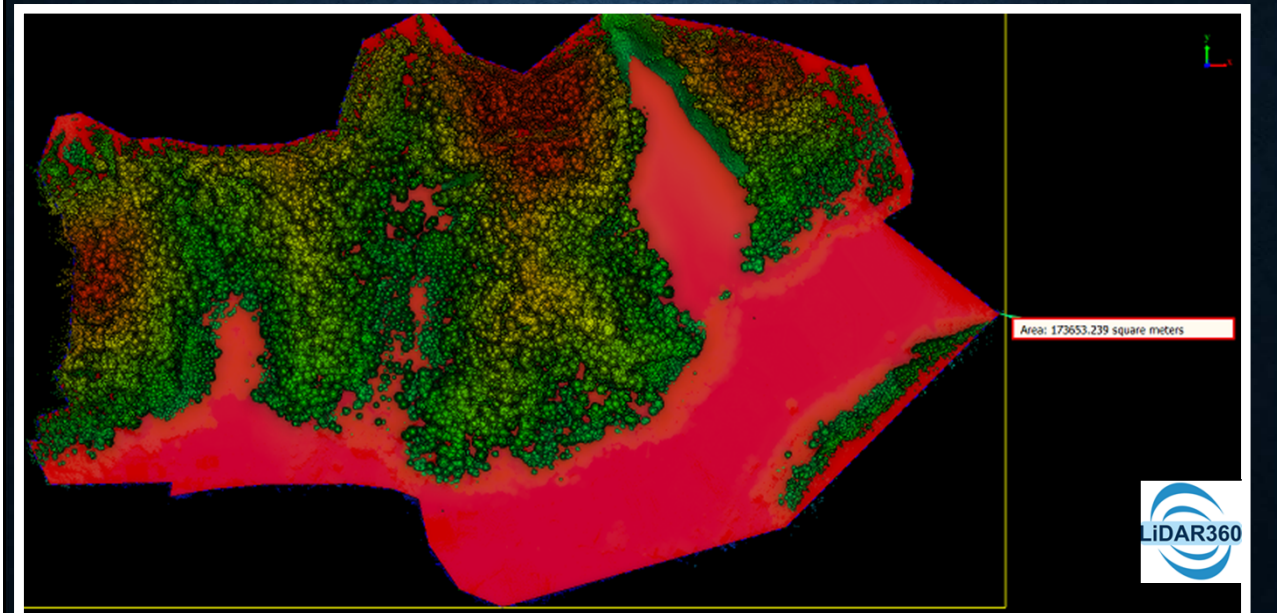
■ データの評価



■ データの評価



■ 計測機能（面積・距離・角度・樹木高）



■ バッチファイルによるデータ処理の半自動化

ファイル コース調整 データ管理 統計 分類 地形 バック編集 ALS森林解析 TLS 森林解析 ビューア
 E I C B T B ID M EDL

Batch Processing
 Point Cloud List:
 D:/Japan_Workshop/Data/Kyoto_Forest_Demo_Site/20180925/Original_Data/2 ^
 D:/Japan_Workshop/Data/Kyoto_Forest_Demo_Site/20180925/Original_Data/2 ^
 D:/Japan_Workshop/Data/Kyoto_Forest_Demo_Site/20180925/Original_Data/2 ^
 D:/Japan_Workshop/Data/Kyoto_Forest_Demo_Site/20180925/Original_Data/2 ^
 D:/Japan_Workshop/Data/Kyoto_Forest_Demo_Site/20180925/Original_Data/2 ^
 D:/Japan_Workshop/Data/Kyoto_Forest_Demo_Site/20180925/Original_Data/2 ^
 D:/Japan_Workshop/Data/Kyoto_Forest_Demo_Site/20180925/Original_Data/2 ^

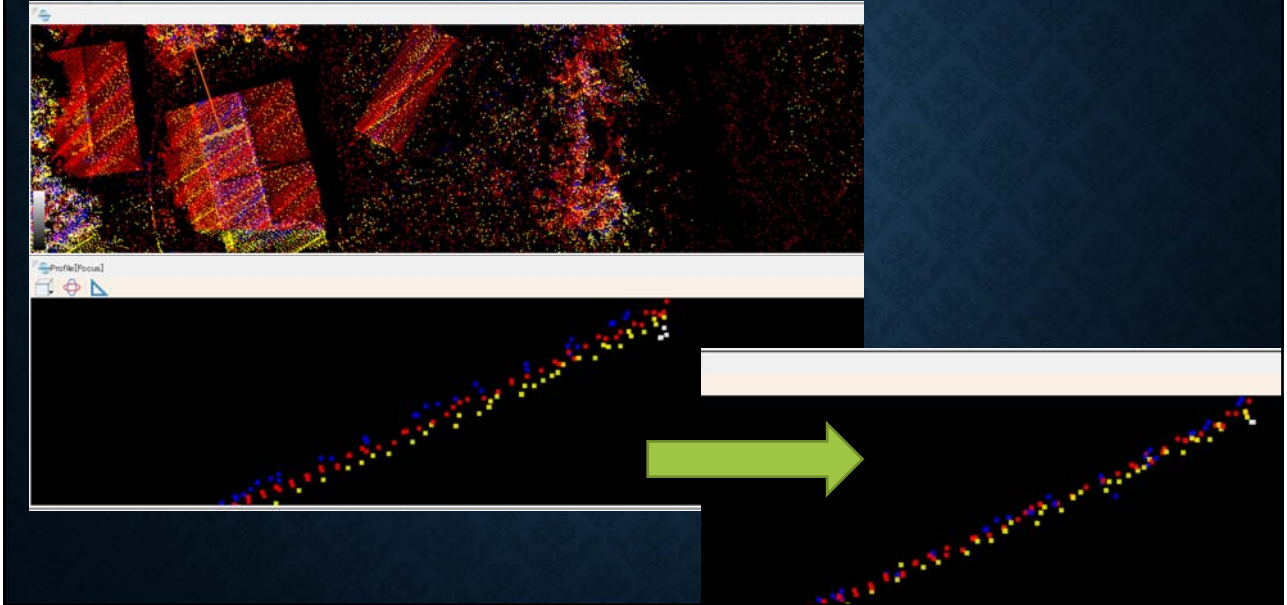
Function List
 Outlier Removal
 Normalization
 Normalization by Ground Class
 Tile by Range
 Tile by Point Number
 Merge
 Boundary
 Subsampling
 PCV
 Define Projection
 Reproject
 Extract Color from Image
 Subdivision
 Transformation

Output path: ...
 Threads Num(1-32): 4
 Execute Cancel

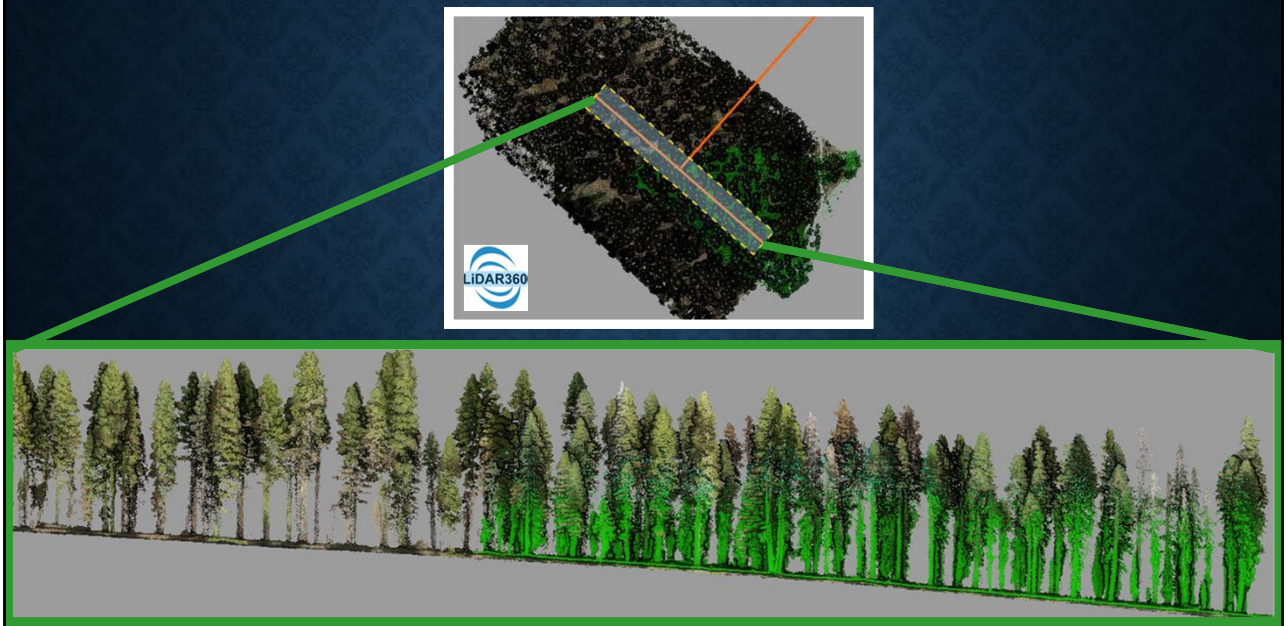
- ・ 専門オペレータ不要
- ・ 時間の有効活用による処理の迅速化



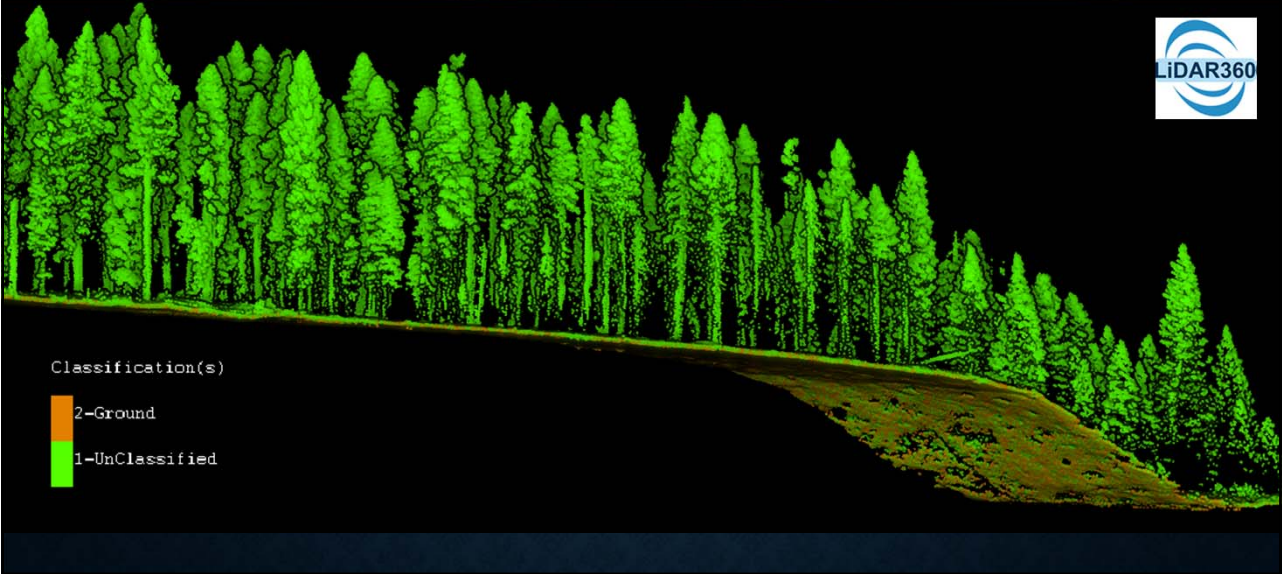
■ コース間調整機能



■ 任意箇所で作断面作成。スムーズなデータ確認



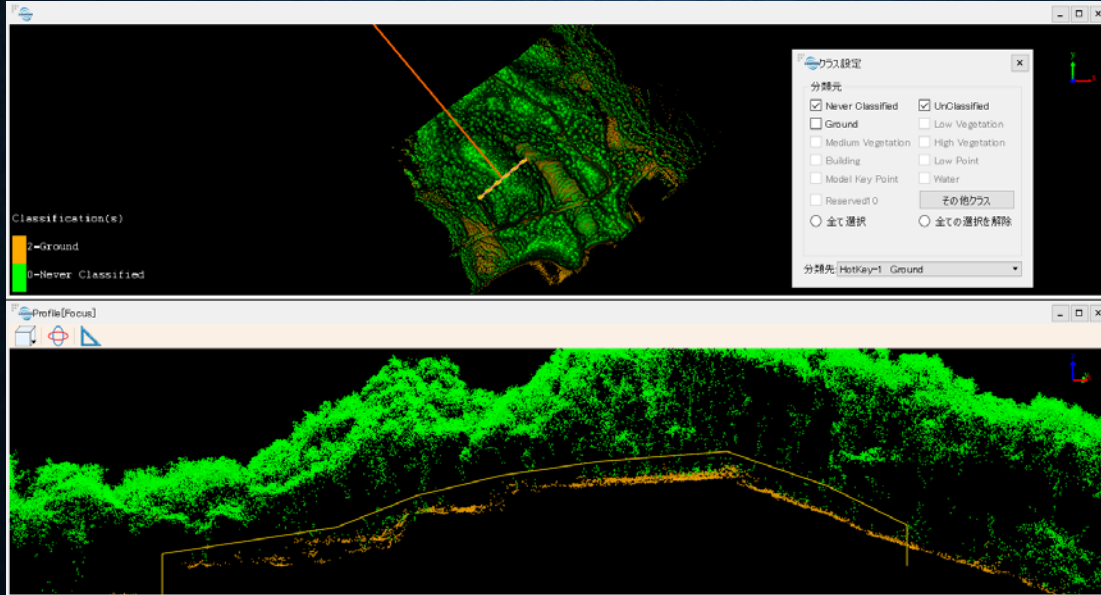
■ 自動での点群分類機能（オートフィルタリング）



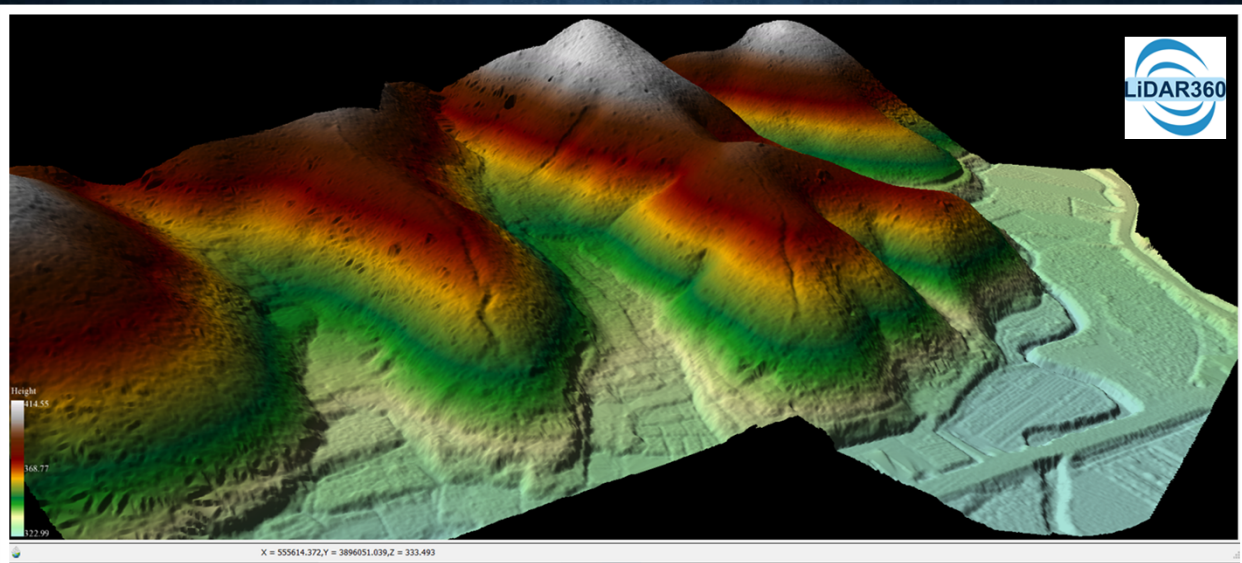
■ 自動での点群分類機能（オートフィルタリング）



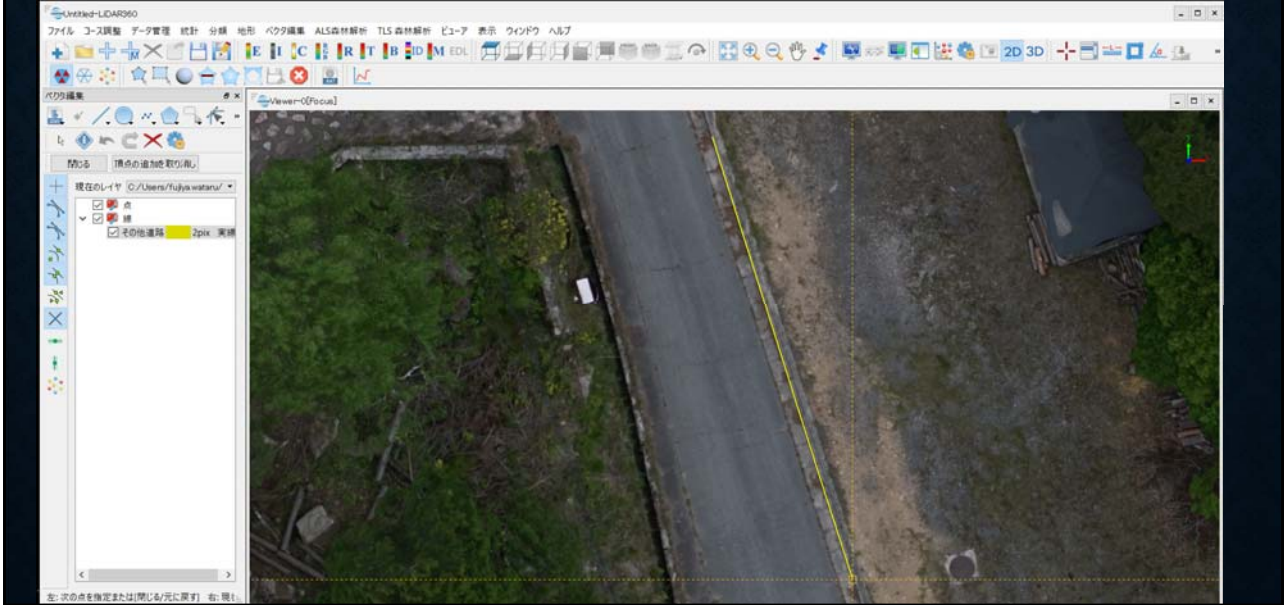
■ 手動での点群分類機能（マニュアルフィルタリング）

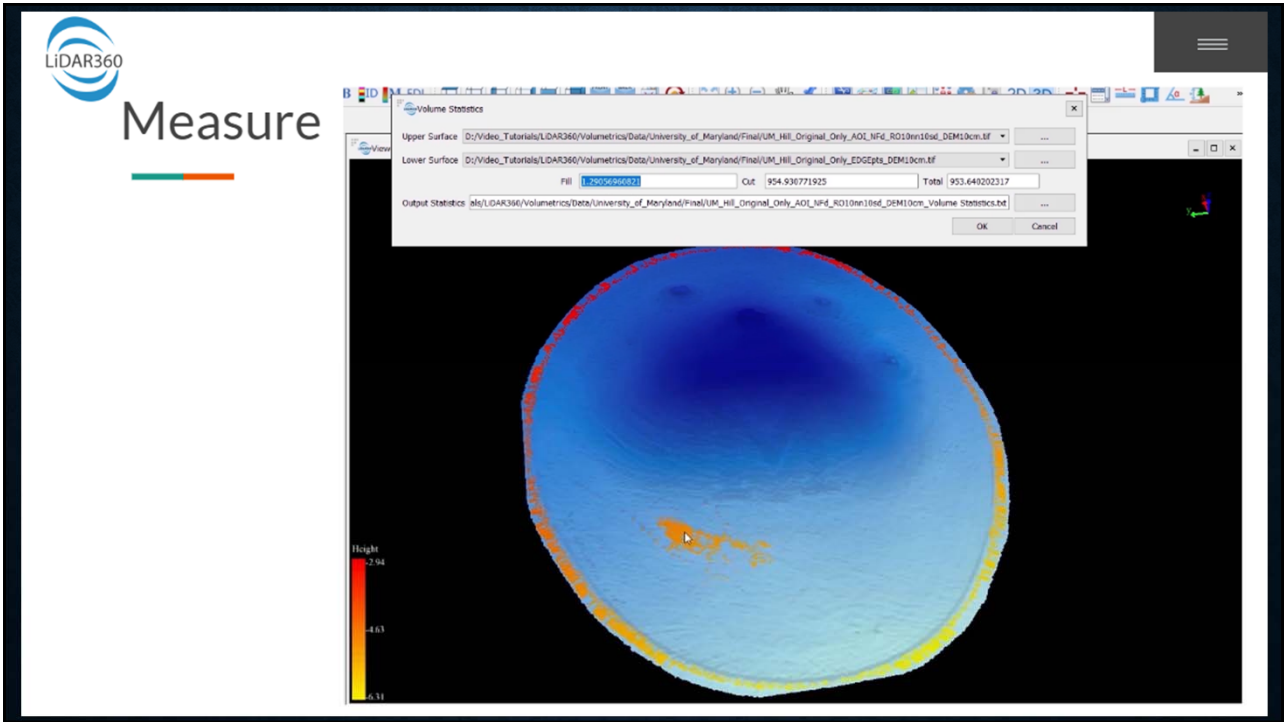


■ 地形モデルの作成（TIN,DEM,DSM）

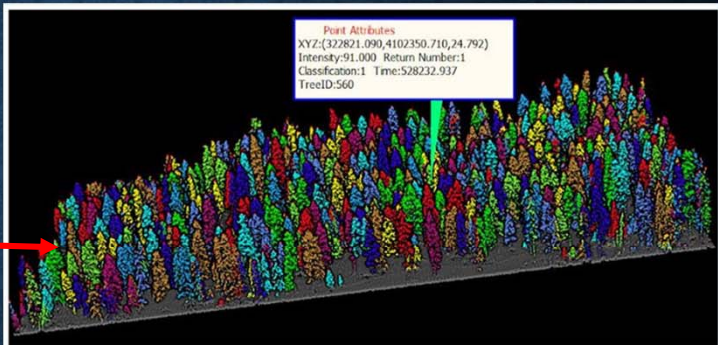
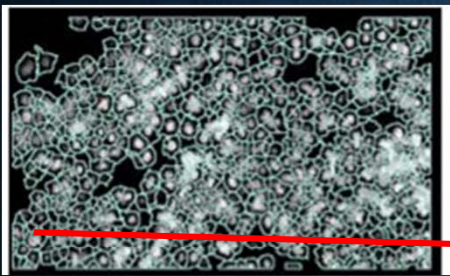


■ ベクタ編集機能（ライン編集・オルソトレース）





■ 森林調査 (UAVレーザによる調査)



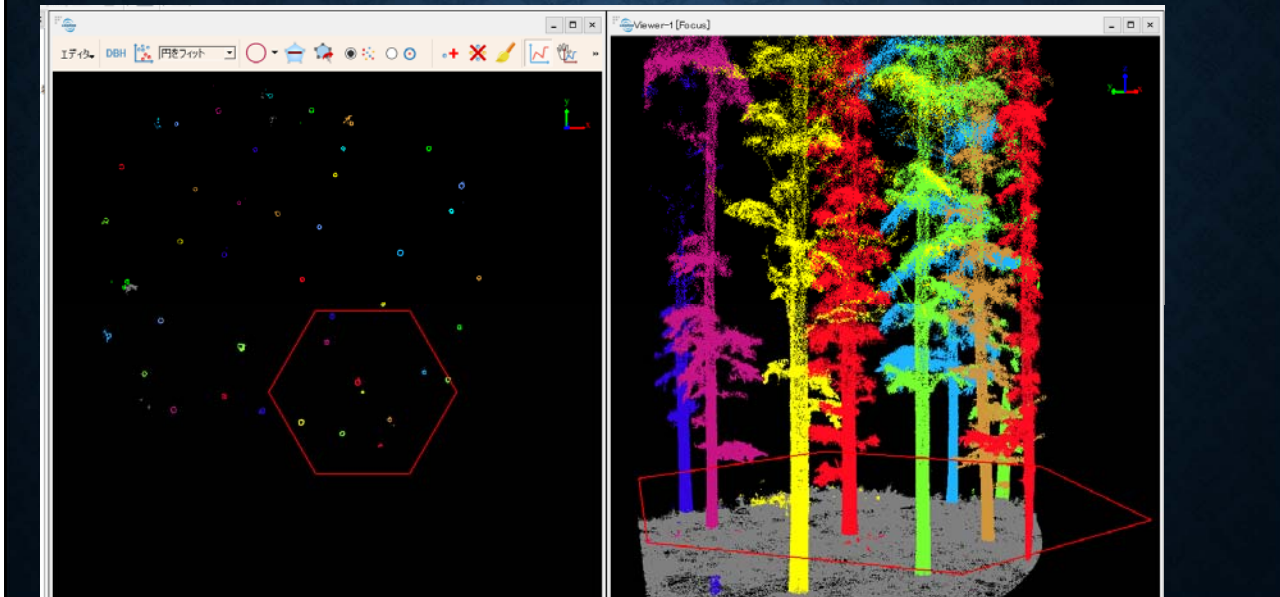
■ 樹木の解析

- 樹木位置(X,Y)
- 樹木高
- 直径
- 面積

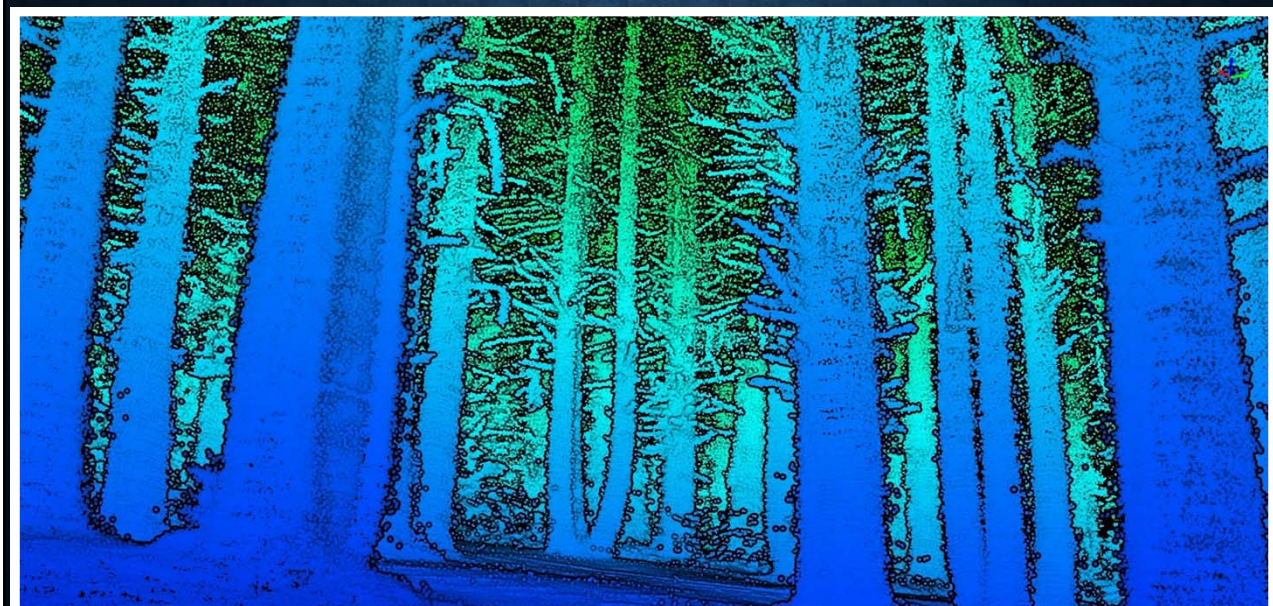
C:\Users\YanJun\Desktop\SampleData\ALSData_Normalization_Point Cloud Segmentation.csv

TreeID	TreeLocationX	TreeLocationY	TreeHeight	CrownDiameter	CrownArea
1	322727.730	4102365.200	56.723	12.594	124.563
2	322710.740	4102389.550	53.302	11.361	101.382
3	322743.640	4102356.160	49.587	6.260	30.781
4	322724.360	4102339.500	49.564	14.265	159.822
5	322712.420	4102265.580	47.735	13.953	152.914

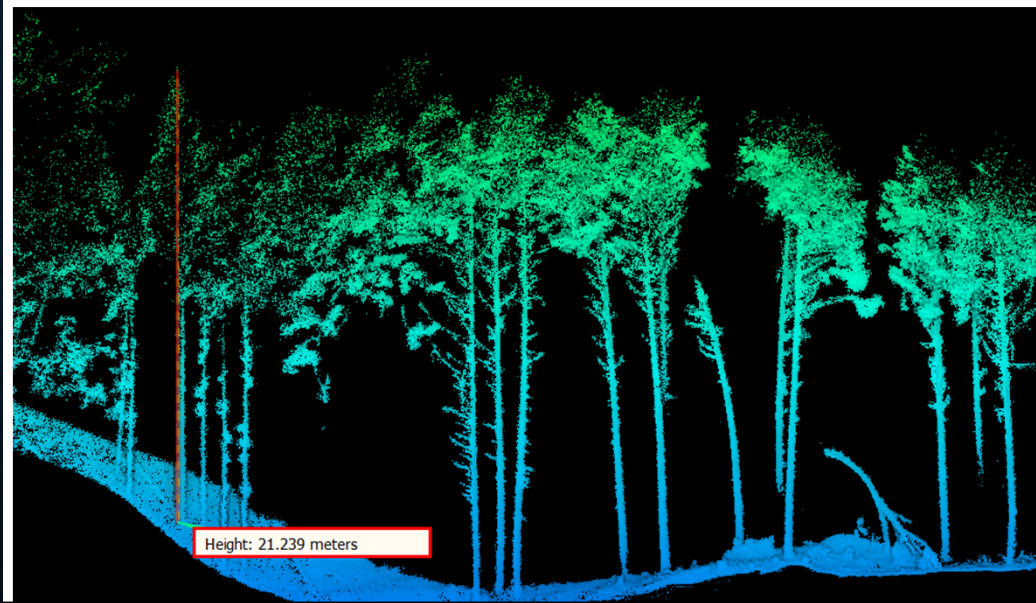
■ 森林調査（地上型スキャナによる調査）



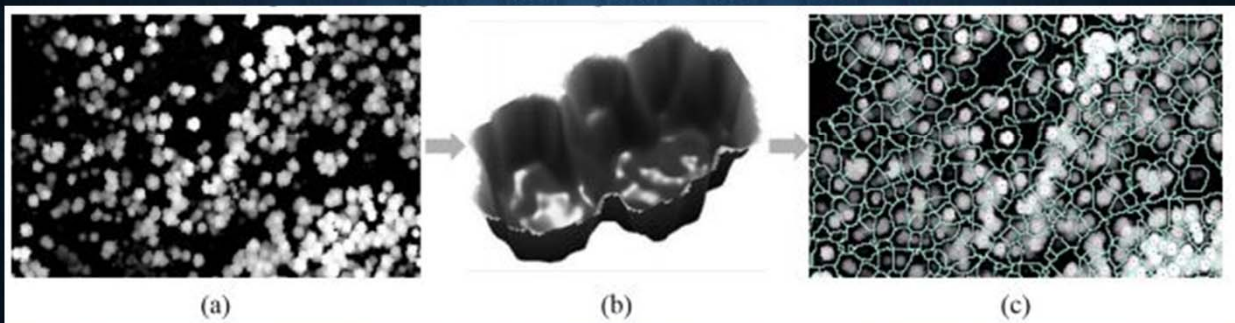
■ 森林調査（地上型スキャナによる調査）



■ 樹木高の計測

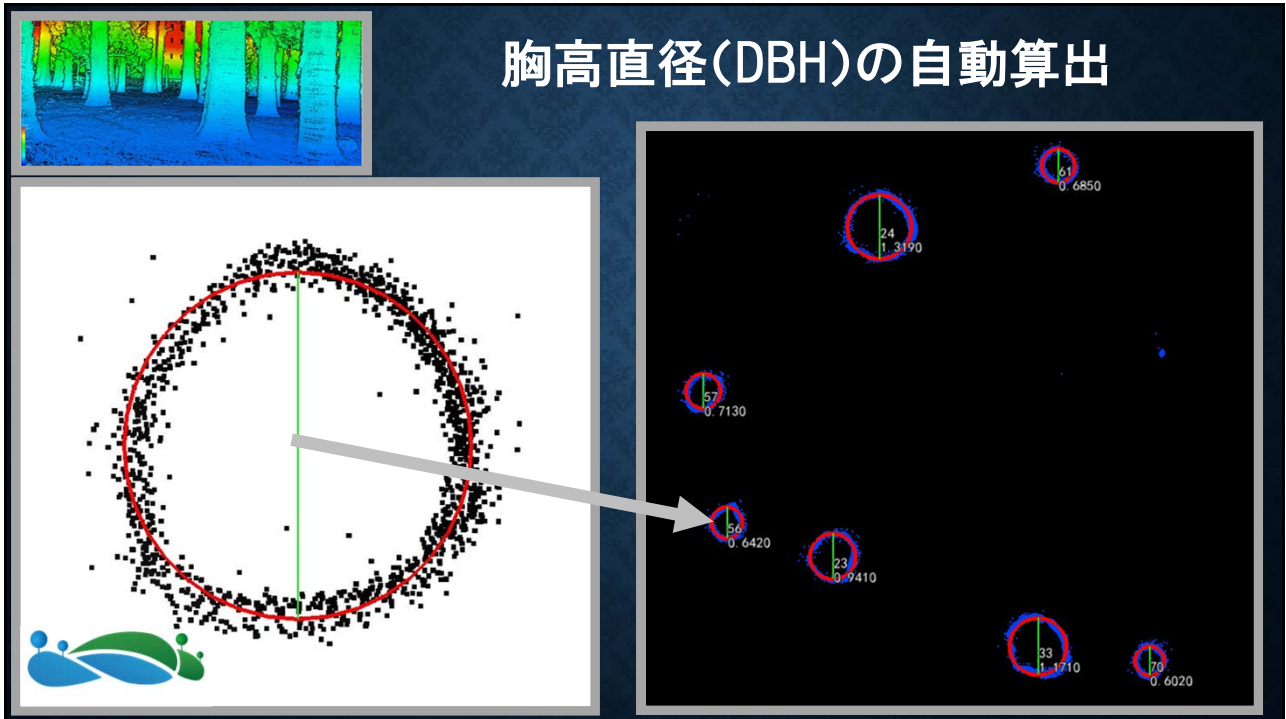


■ 樹木の分割（単木抽出）

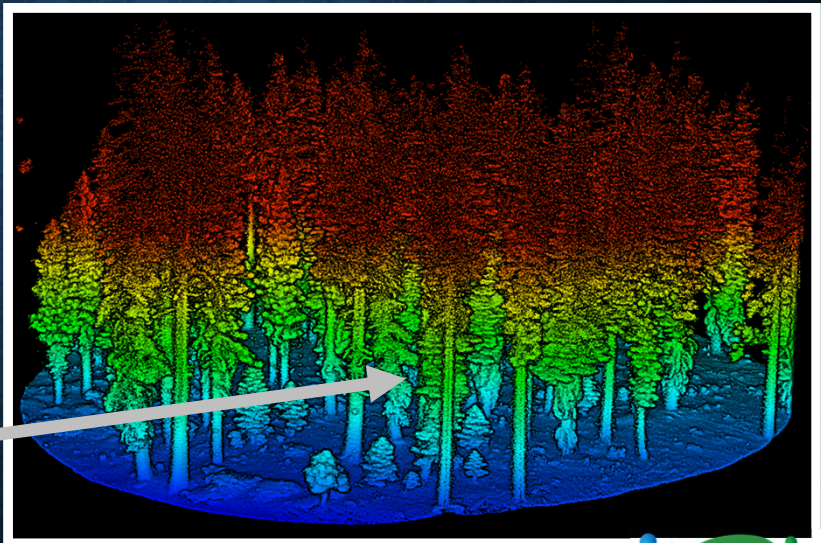
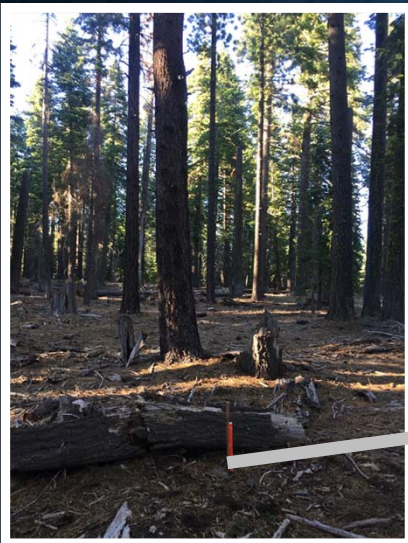


Canopy Height Model (CHM) Segmentation Algorithm





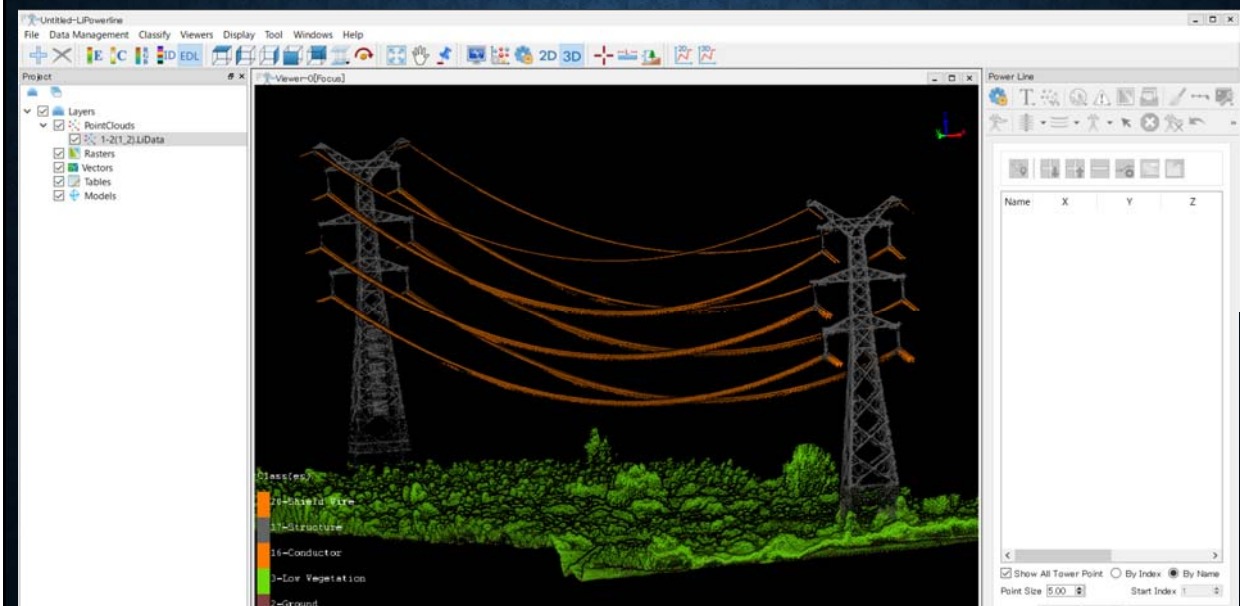
■ 樹木の維持・管理



■ 電線・鉄塔管理



■ 離隔調査(静止時・気象条件・成長時)



報告用レポート作成

Report:Real-Time Safety Risk Assessment

Assessor Company:
Report Date:2018/3/22

Table 2. 19-20 (wapaneria19_wapaneria20) Danger Objects

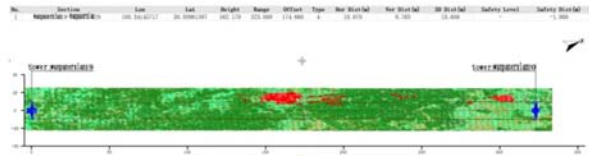


Figure 3. 19-20(wapaneria19_wapaneria20) Top View.

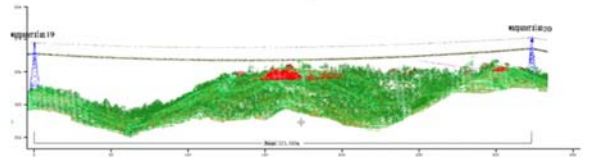


Figure 4. 19-20(wapaneria19_wapaneria20) Side View.

2. Danger Objects Table

No.	Section	Lon	Lat	Height	Range	Offset	Type	Min. Size(M)	Max. Size(M)	Min. Size(M)	Max. Size(M)	Safety Level	Safety Size(M)
1	wapaneria19 - wapaneria19	146.2442722	36.5916617	346.392	425.156	22.862	14	14.273	9.216	14.961	14.961	-	-1.000
2	wapaneria19 - wapaneria19	146.2442722	36.5916617	346.379	425.169	174.499	4	14.274	9.216	14.961	14.961	-	-1.000
3	wapaneria19 - wapaneria19	146.2427614	36.5916617	346.439	405.218	47.219	4	14.274	9.216	14.961	14.961	-	-1.000
4	wapaneria19 - wapaneria19	146.2427614	36.5916617	346.432	429.466	106.224	4	14.274	9.216	14.961	14.961	-	-1.000
5	wapaneria19 - wapaneria19	146.2442722	36.5916617	346.399	447.819	344.229	4	14.274	9.216	14.961	14.961	-	-1.000

LiDAR360

© 2018 GreenValley International, Ltd. All Rights Reserved.

GreenValley International
Map the World in 3D

The banner features a blue world map in the background. A helicopter is shown flying over a 3D terrain scan that is color-coded by elevation. The scan shows a valley with a riverbed. The text 'LiDAR360' is prominently displayed in the center. At the bottom, there is a logo for GreenValley International and the tagline 'Map the World in 3D'.